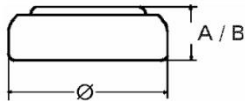


Type Number	379
Designation IEC	SR 63
System	Silver oxide/ Zinc / NaOH -Electrolyte
Nominal Voltage	1.55 V
Typical Capacity C	15 mAh
Temperature Ranges	min max.
Storage	0°C 60°C
Discharge.....	0°C 60°C



Dimensions	min	max
Diameter.....	5,65	5,80
Height (A/B).....	1,95	2,15
Weight (approx.)	0,23 g	

Typical Capacities (at 20°C)

Discharge Type	Continuous 24h/d, 7d/w
Load	68100 Ω
End Voltage	1.2V
Time	560 h

No publication or circulation of data to third parties without consent of VARTA Consumer Batteries

All Data contained herein is for single cells.
For battery applications, performance data may vary from single cell data, depending on specific battery configuration.