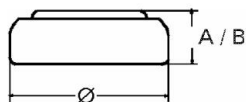


Type Number..... 315
Designation IEC..... SR 67
System..... Silver oxide/ Zinc /
 NaOH - Electrolyte



Nominal Voltage..... 1,55 V
Typical Capacity C..... 20 mAh
 Load 39 k Ω , at 20°C down to 1.2 V

Weight (approx.)..... 0,33 g
Volume..... 0,09 ccm
Coding..... Date of Manufacturing
 Month/Year

Temperature Ranges	min	max.
Storage.....	0°C	60°C
Discharge.....	0°C	60°C

Dimensions	min	max.
Diameter (Ø).....	7,75	7,90
Height (A/B).....	1,47	1,65

Typical Capacities (at 20°C)

Discharge Type	Load	End Voltage: 1.2V	
Continuous 24h/d, 7d/w	39000 Ω	Time:	530 h
		Capacity:	20 mAh
		Energy:	31 mWh

No publication or circulation of data to third parties without consent of VARTA Consumer Batteries

All Data contained herein is for single cells
 For battery applications, performance data may vary from single cell data, depending on specific battery configuration